



Lower Lodge Rugeley Road | Rugeley | WS15 4BF

£220,000

 **Webbs**
estate agents

Summary

**** POPULAR LOCATION ** BEAUTIFULLY PRESENTED THROUGHOUT ** THREE BEDROOMS ** UTILITY ROOM ** OPEN PLAN KITCHEN DINING ROOM ** LIVING ROOM ** ENSUITE ** BATHROOM ** WRAP AROUND GARDENS ** OFF ROAD PARKING FOR TWO VEHICLES ** VIEWING ADVISED ****

WEBBS ESTATE AGENTS are pleased to market this beautifully presented, three/ four bedroom park home, located on the ever popular Lower Lodge Park Home. Viewing of the property is essential to fully appreciate the deceptive accommodation on offer. The internal accommodation briefly comprises; living room, open plan kitchen dining room, three bedrooms, utility room/ bedroom four, ensuite and bathroom. The property also benefits from a wrap around garden and off road parking for two vehicles.

Key Features

- POPULAR LOCATION
- THREE/ FOUR BEDROOMS
- LIVING ROOM
- BATHROOM
- OFF ROAD PARKING FOR TWO VEHICLES
- BEAUTIFULLY PRESENTED THROUGHOUT
- OPEN PLAN KITCHEN DINING ROOM
- ENSUITE
- WRAP AROUND GARDENS
- VIEWING ADVISED

Rooms and Dimensions

Living Room

12'1 x 10'4 (3.68m x 3.15m)

Dining Room

17'5 x 7'4 (5.31m x 2.24m)

Kitchen

8'2 x 10'3 (2.49m x 3.12m)

Hallway

Bedroom 1

15'11 x 9'1 (4.85m x 2.77m)

Ensuite

5'3 x 9'0 (1.60m x 2.74m)

Bedroom 2

11'5 x 9'3 (3.48m x 2.82m)

Bedroom 3

8'8 x 5'7 (2.64m x 1.70m)

Utility Room

4'11 x 5'7 (1.50m x 1.70m)

Bathroom

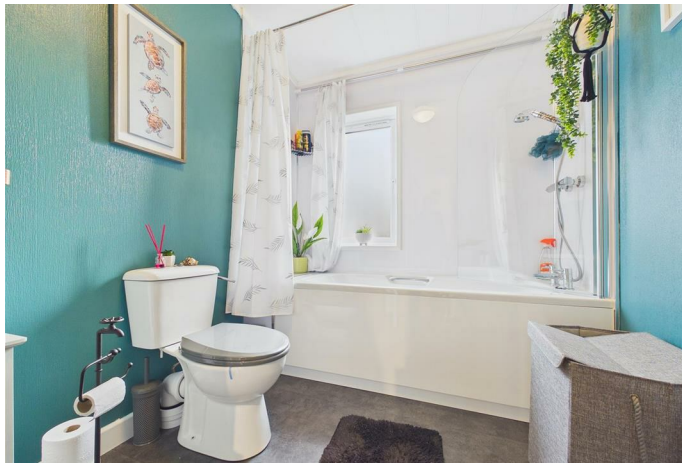
6'6 x 9'0 (1.98m x 2.74m)

IDENTIFICATION CHECKS (R)

The Mobile Homes Act 1983 (C)

Agents Notes







Webbs Estate Agents - endeavour to maintain accurate depictions of properties in Virtual Tours, Floor Plans and descriptions, however, these are intended only as a guide and purchasers must satisfy themselves by personal inspection.

Globe House Upper Brook Street, Rugeley, Staffordshire, WS15 2DN

Tel: 01889 583377 | Email: rugeley@webbsea.co.uk | www.webbestateagents.co.uk